



Expedition report – Armenia 2022

Time frame: 18.06.2022 – 29.06.2022

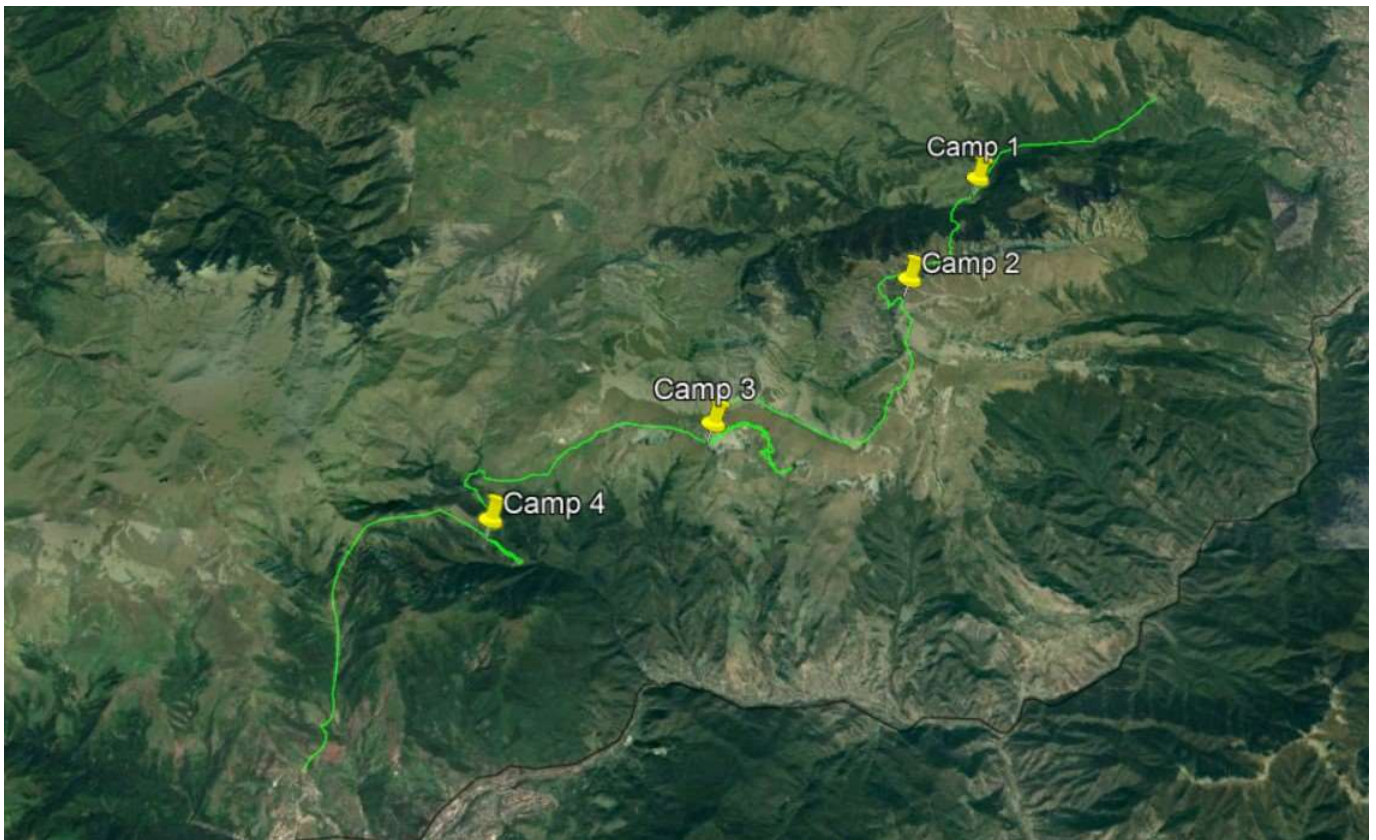
Duration of Expedition: 19.06.2022- 24.06.2022	Start position 40°54'54.58"N 45° 4'46.76"E	Final Position 40°45'30.62"N 44°50'10.93"E	Expeditionteam: 9 members
Day 1 – 19.06.2022 <i>departure ~ 1345h</i>	Weather conditions: foggy conditions, light to medium rain in the morning	Description of itinerary and water sources: see page 2	Camp position and description: abandoned church building in remote village complex – <i>water source available</i> Hm: 1396msl GPS: 40°53'17.57"N 45° 1'14.36"E
Day 2 – 20.06.2022	Weather conditions: foggy conditions with short clear ups	Description of itinerary and water sources: see page 3	Camp position and description: edge of wild pasture, close distance to rugged mountain cliffs with view of the next day's ascent – <i>no water source available</i> Hm: 2186msl GPS: 40°51'32.18"N 44°59'49.83"E
Day 3 – 21.06.2022	Weather conditions: foggy conditions with rain, short clear periods in the evening hours, medium to heavy winds	Description of itinerary and water sources: see page 4	Camp position and description: edge of wild pasture, close distance to rugged mountain cliffs with view over the valley and nearby cliffs – <i>water source available</i> Hm: 2320msl GPS: 40°49'29.50"N 44°56'28.12"E
Day 4 – 22.06.2022	Weather conditions: clear, sunny conditions until noon, heavy rain and thunderstorms until early evening, clear until dawn	Description of itinerary and water sources: see page 5	Camp position and description: edge of wild pasture, close distance to rugged mountain cliffs with view over the valley and nearby cliffs – <i>water source available</i> Hm: 2320msl GPS: 40°49'29.50"N 44°56'28.12"E
Day 5 – 23.06.2022	Weather conditions: clear sunny conditions in the morning, occasional clouds and soft winds in the daytime, distant thunderstorm in the late afternoon, soft to medium rain in the early evening	Description of itinerary and water sources: see page 6	Camp position and description: pasture close to old farm building, surrounded by trees - <i>water source available</i> Hm: 1624msl GPS: 40°48'21.18"N 44°52'49.84"E
Day 6 – 24.06.2022 <i>Arrival ~ 1500h</i>	Weather conditions: clear sunny conditions in the morning, occasional clouds and soft winds in the daytime	Description of itinerary and water sources: see page 7	Camp position and description: n/a



Expedition Report Summary

Character of the Tour: Scouting Tour of unknown route

Map:



Height profile:



Risk evaluation: Medium Risk overall

unknown territory sections, availability of water sources unknown, possibility of high sun exposure and temperatures leading to dehydration and heat exhaustion, at the same time increased risk in foggy conditions, thunderstorms and lightning, especially because of exposure on high elevation without natural shelter, encounter with wild and domestic animals such as horses, cows, and shepherd dogs during the trek as well as them staying close to camp at night, risk of dog attacks if guarded animals or guarded property is approached, risk of grazing animals tripping over tents

Injury report: light to medium sunburn on several individuals, no serious injuries

River crossings: Low Risk overall

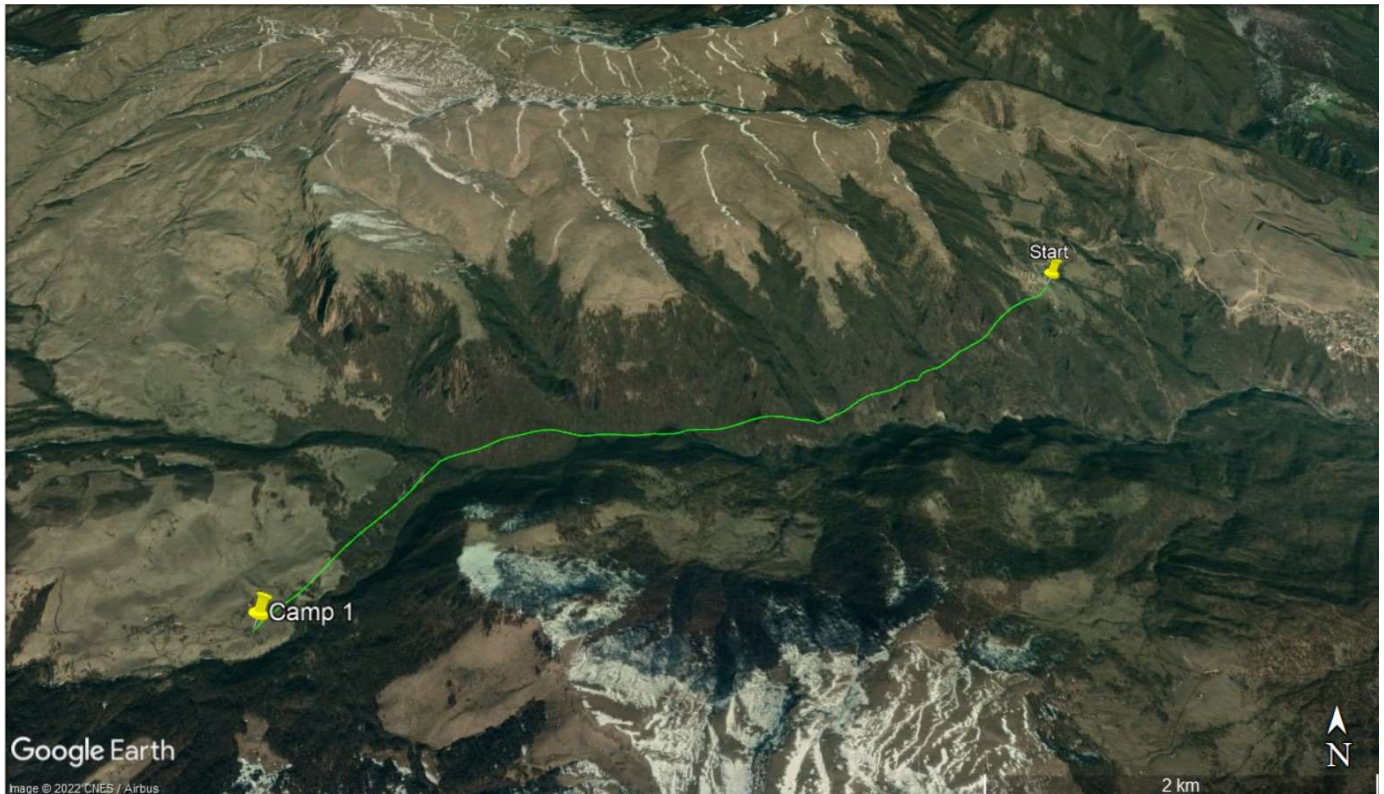
Rivers with medium to strong flow were equipped with bridges

Rivers with light to medium flow could be crossed easily and safely without trouble



DAY 1 – 19.06.2022

Map:



Height Profile:



Description of itinerary and water sources:

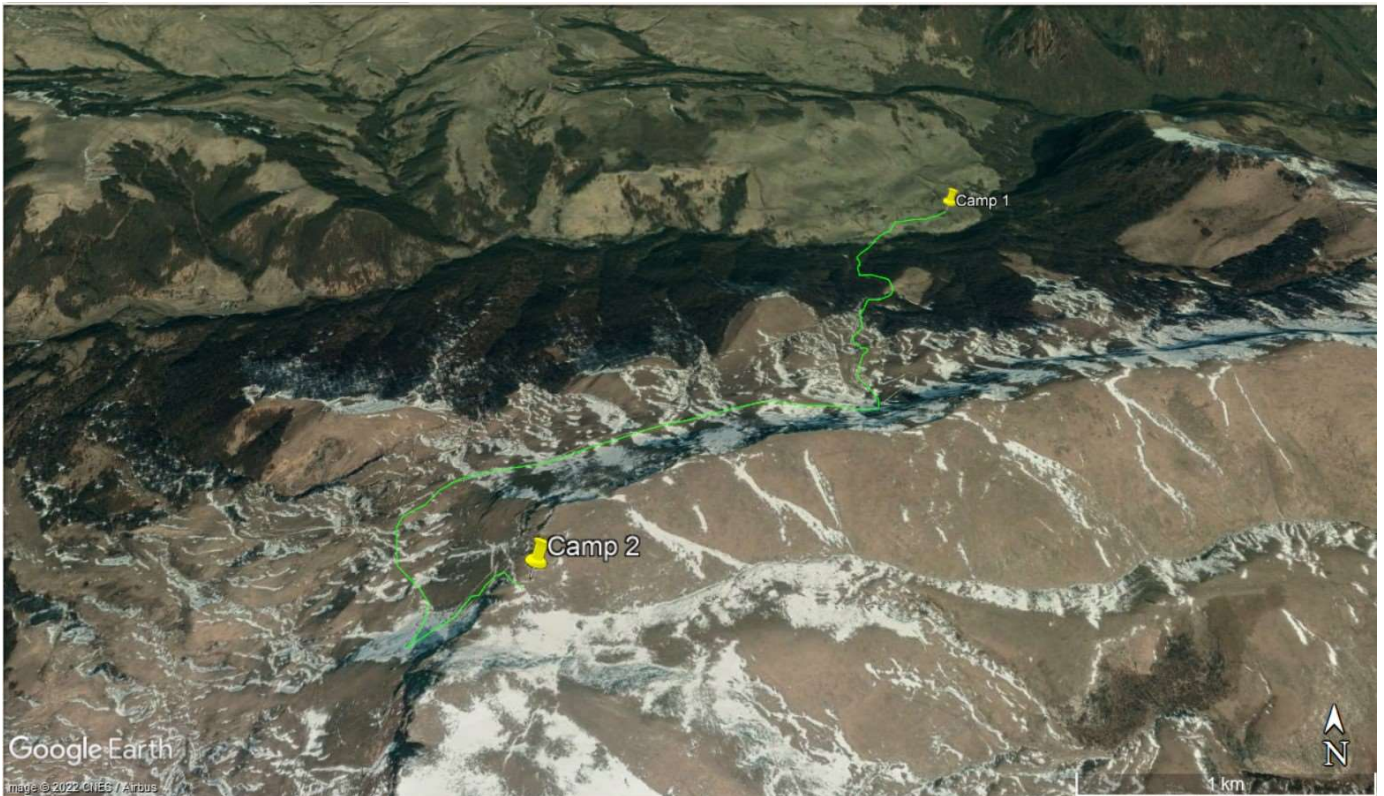
After arriving at the drop-off point we headed along the horse pen towards the forest. There is a well visible path leading through the forest most of the time. In some spots the foliage has overgrown the path, but with paying attention it can be followed without problems. Risk is caused by fallen trees, that block the path for multiple meters. Some can be easily stepped over, but some must be detoured around. In our case it had rained before, so multiple parts of the path were slippery and had to be walked over carefully, due to the wet conditions. There is a river with heavy to medium flow in the forest, that needs to be crossed, but a bridge construction is leading over it safely. Watch out for rotten walking logs.

After crossing the forest, there is a old back road leading further into open terrain. It is mostly grown over but still quite visible. It leads across the open flat, where Camp 1 is located on the map. It seems to be an old village road, as several small farms are located around it.

Camp Position and description

Due to cold and wet weather conditions we built our camp in the abandoned church building in the remote village complex – *water source available*

Hm: 1396msl | **GPS:** 40°53'17.57"N 45° 1'14.36"E


DAY 2 – 20.06.2022
Map:

Height Profile:

Description of itinerary and water sources:

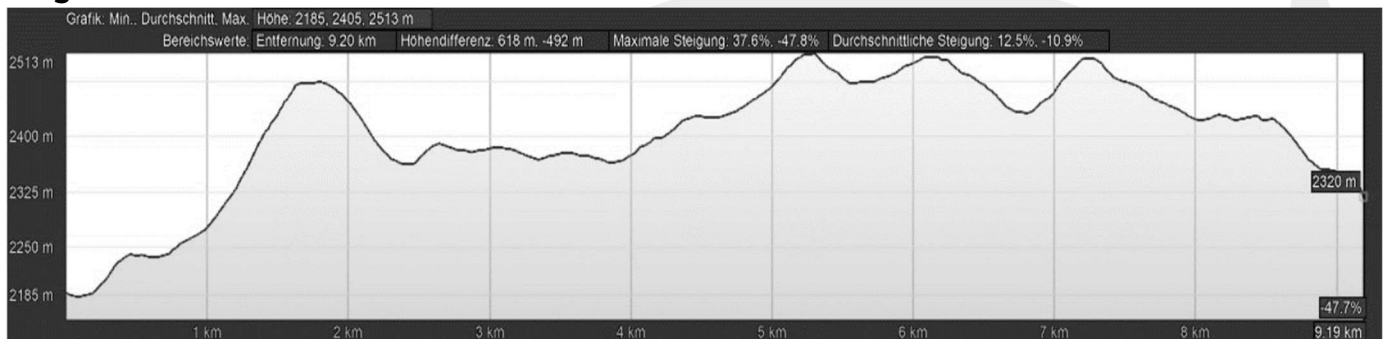
Heading further down the village road, led us to another river. Due to the heavy rainfall, the water level was too high to cross it. There was an old wooden Bridge with a big hole in it. We fixed it with logs from the area and were able to cross it safely. Afterwards the route was strenuously uphill. It does follow a steep forest road the first kilometers. Above the treeline the landscape turns into grassy pasture leading upwards further and the road can be followed for most of the time. It is not steep but does continue uphill. After meeting a local farmer, he showed us a route that took us straight uphill using the cows pasture path, which led us to our second camp, right above the first level of cliffs. This steep and exhausting shortcut can be avoided by going further along the cliffs and entering the pass on a narrower way

Camp Position and description

We camped on the edge of a wild pasture, with close distance to rugged mountain cliffs with view of the next day's ascent – *no water source available*

Hm: 2186msl | **GPS:** 40°51'32.18"N 44°59'49.83"E


DAY 3 – 21.06.2022
Map:

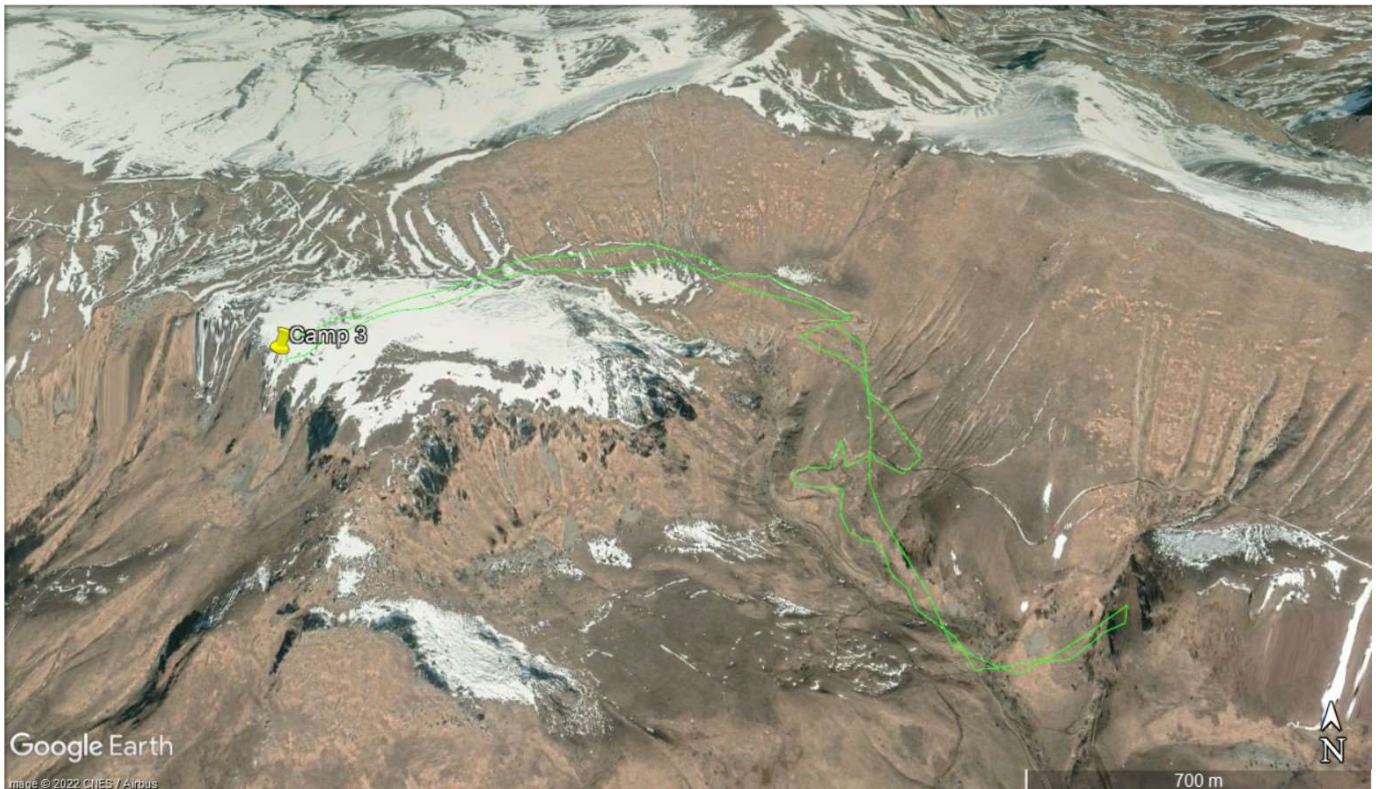
Height Profile:

Description of itinerary and water sources:

Following the wild pasture towards the next level of cliffs. Came across a huge herd of horses, which followed us for a while. The ascend right around the cliffs was steep and grassy at first, turning rocky with big boulders closer to the cliffs. We went up one side but decided that it was not suitable for passing it with the heavy packs, so we descended for about 10 Meters, detoured around a boulder group, and found an easy to medium path across rocks and boulders, leading up the cliffs in a more or less zig-zag pattern. It was important to pay close attention to loose rocks and gaps. The route furthermore descends through a valley, which was wild pasture for cows and horses. Some of them were guarded by big mountain dogs, willing to protect them forcefully. It leads out of the valley again, past a remote farm and up the highest mountain peak of this range. After light hills the route leads onto a wildlife pasture and across, on a high plateau, overlooking the nearby cliffs in clear conditions.

Camp Position and description:

We camped on the edge of a wild pasture, with close distance to rugged mountain cliffs and view over the valley and nearby cliffs – *water source available*

Hm: 2320msl | **GPS:** 40°49'29.50"N 44°56'28.12"E


DAY 4 – 22.06.2022
Map:

Height Profile:

Description of itinerary and water sources:

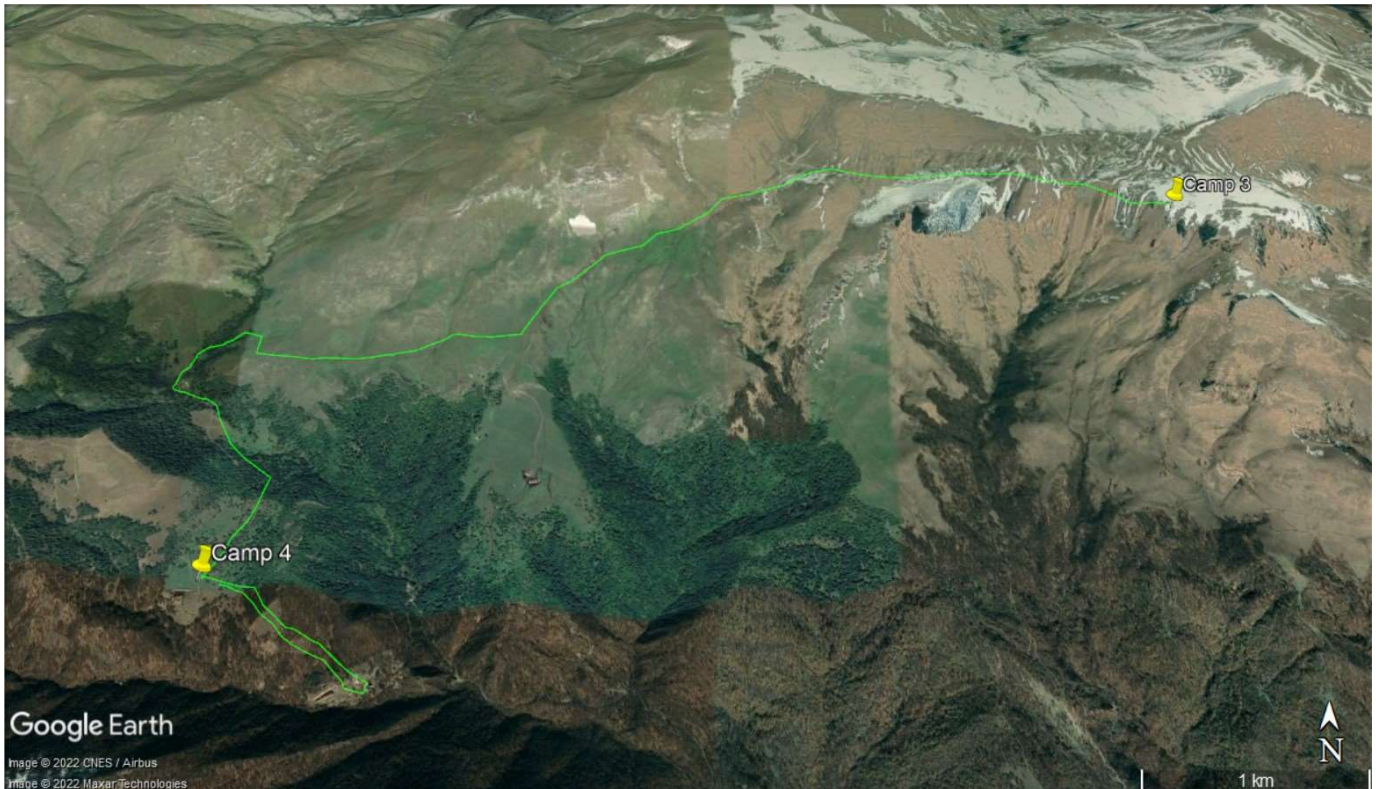
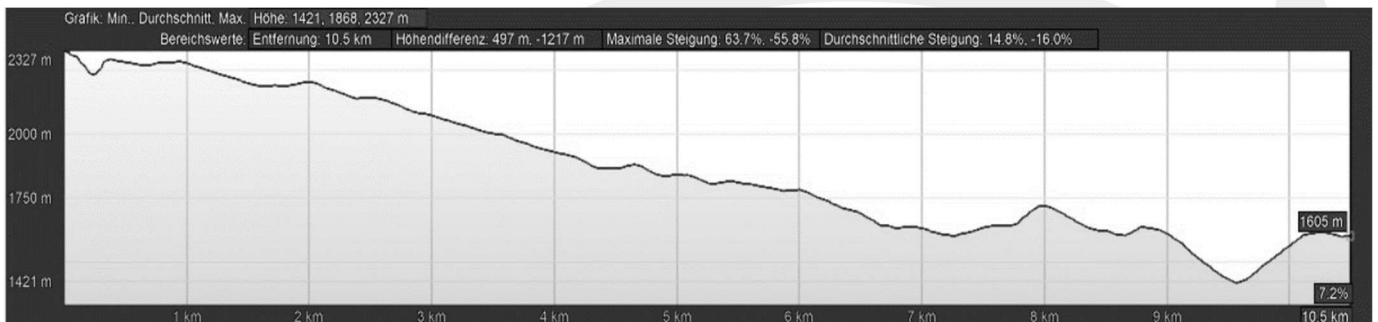
Day Trip to a nearby waterfall, meant as a rest day. Descend following the backcountry mountain road leading down a well visible path. Serpentine lead all the way down to the valley, but instead of following it, there is a small turn left that has to be done after about 3,5km. There is no path leading uphill from here, but there is some cow trails that can be used for easier uphill walking. The Waterfall is not visible until you get high enough and actually turn into the correct boulder crease. To do so, you ascend using the cow trails until you get close to the bottom of the cliffs. Afterwards you follow the cliffs, which will lead over some loose rocks and boulders. If you go far enough and keep close to the boulders, it will navigate you straight to the riverbed which is visibly fed by the waterfall.

We enjoyed a shower and can only recommend. We took the same way back into our camp.

Camp Position and description:

Same Camp as the day before. We camped on the edge of wild pasture, with close distance to rugged mountain cliffs and view over the valley and nearby cliffs – *water source available*

Hm: 2320msl | **GPS:** 40°49'29.50"N 44°56'28.12"E

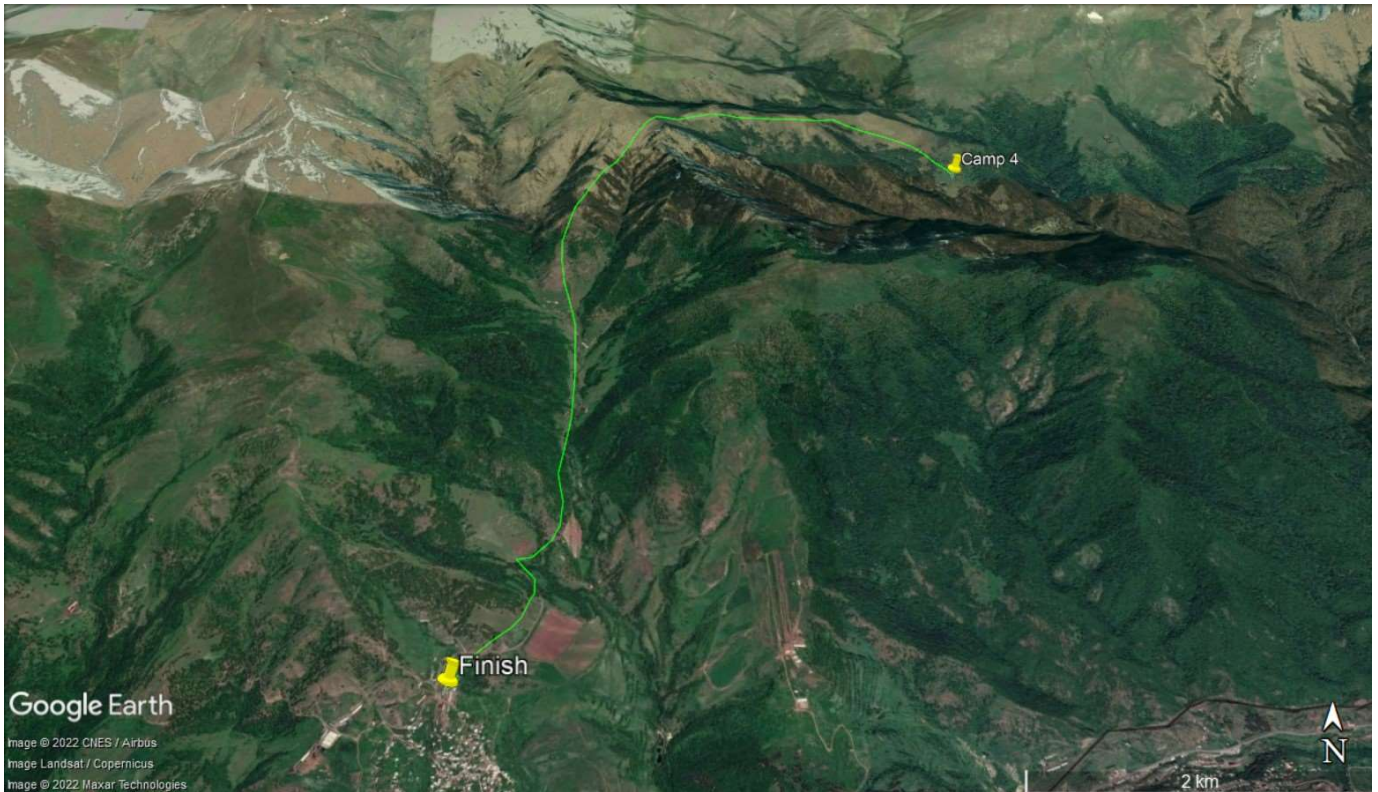
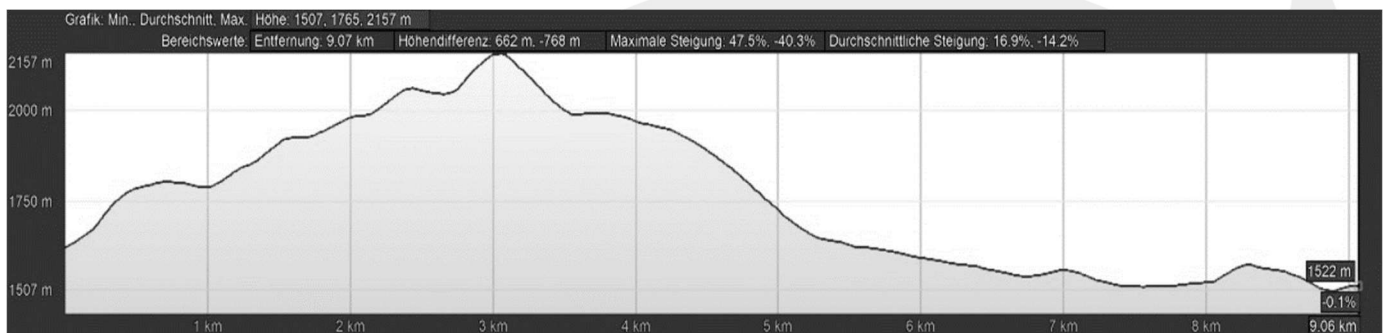

DAY 5 – 23.06.2022
Map:

Height Profile:

Description of itinerary and water sources:

Leaving camp following the pasture along the cliffs, which lower in height gradually. A well visible pasture road leads across the fields and can be followed all the way to our Camp Location. There are multiple streams and springs along the way. After setting up camp we started the descend for a half day tour to the Hargartsin monastery, located 45 minutes downhill. After learning about the cultural aspect of the building we ascended back to our camp. The Monastery is a water source as well as the farm building, we stayed next to.

Camp Position and description:

We stayed at a pasture close to old farm building, surrounded by trees. The Pasture is in active use and the cows will come close to investigate the camp. Caution is advised to prevent them from tripping over tent lines and possibly crushing tents - *water source available*

Hm: 1624msl | **GPS:** 40°48'21.18"N 44°52'49.84"E


DAY 6 – 24.06.2022
Map:

Height Profile:

Description of itinerary and water sources:

Leaving camp following a grown over path for a while until navigating across some fields to start ascending towards the mountains, over high elevation pasture. The ascend consists of mainly two steep parts, the rest is easier but still mainly uphill. After crossing the mountain pass, between two significant peaks, we started descending to the pickup point via a road in rocky and overgrown conditions leading through multiple small farmers villages. There were a lot of farm dogs and guard dogs along the way, protecting property and herds of cows forcefully - Caution they do follow if triggered.

Additionally, there were lots of river crossings with light to medium flow, but easily crossable with a sure foot and good balance. Probably caused by heavy rains the days before, these rivers are no water source to rely on, due to lack of reliability and dirty pastures around.

After a long descend the pick up point was reached and we were able to successfully finish the Armenia Expedition 2022.

Camp Position and description:

n/a, Pick up around 1500hrs